

In-Depth Crash Hangar Lab

ERAU Virtual Hub

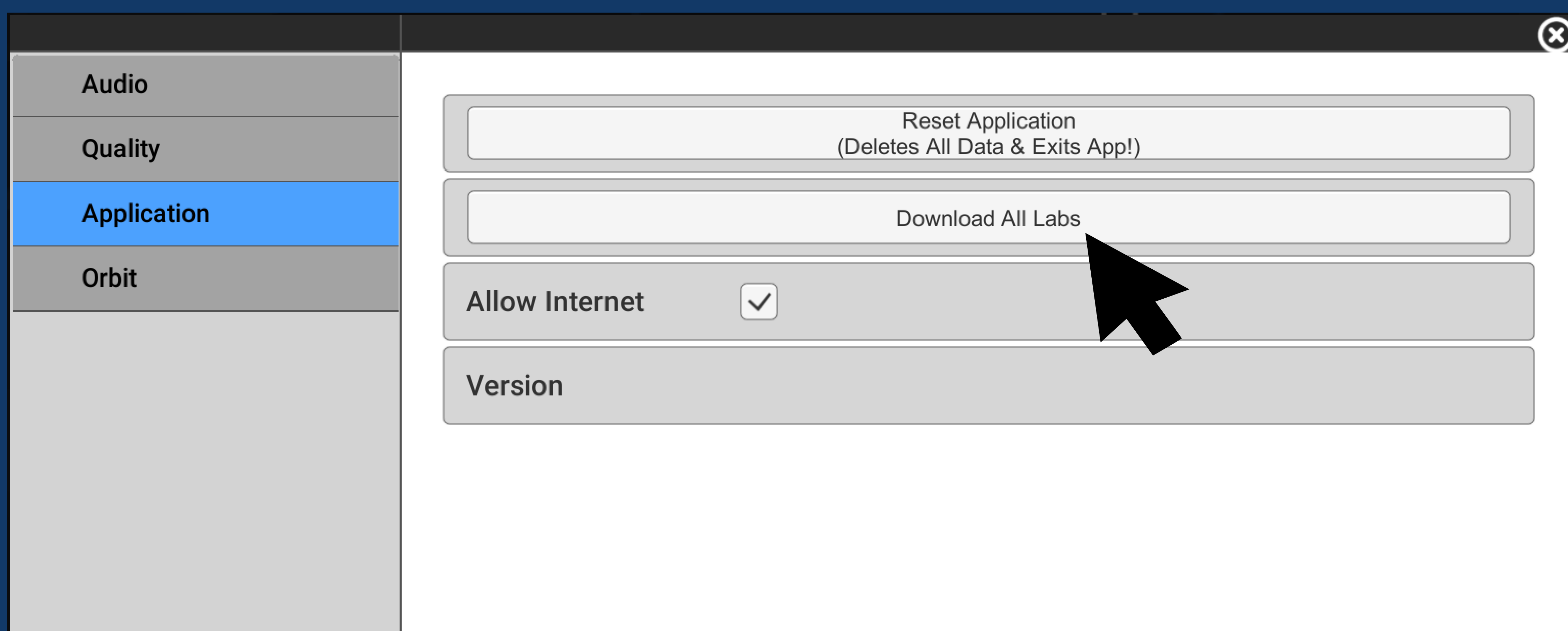


Recommended for all users

After downloading the lab, click the settings button at the top left corner.

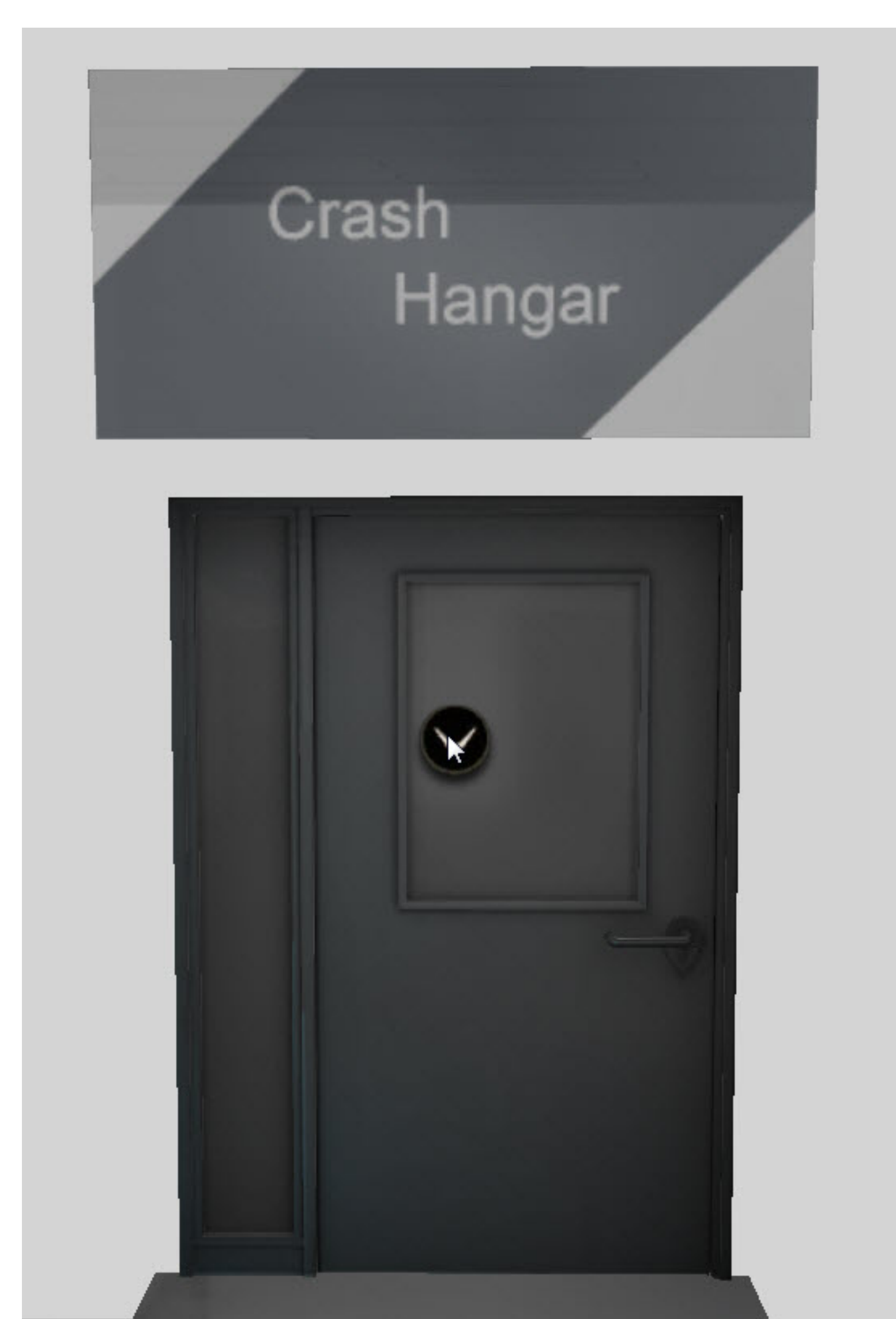


Next under the application tab click the "Download All Labs" button. This will eliminate the requirement to be connected to the Internet.



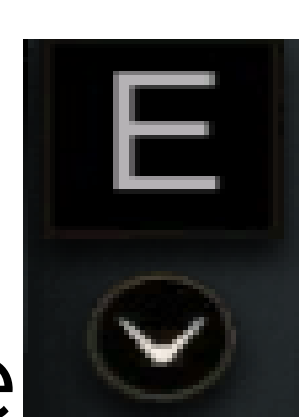
ERAU Virtual Hub

Welcome to the ERAU Virtual Hub

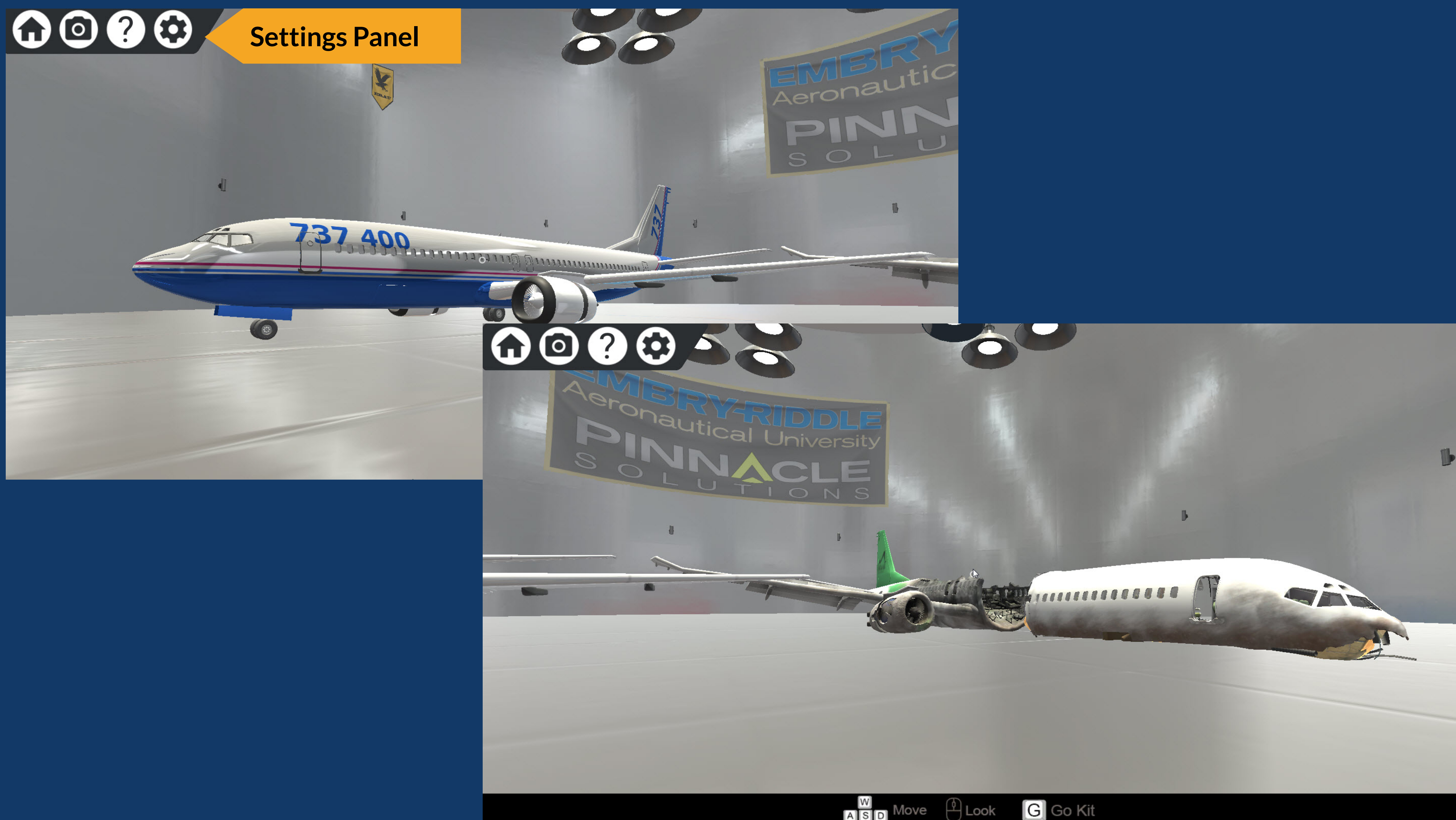


Once you step through the Crash Hangar Lab doors, you will be able to inspect the damage of the crash and compare it to a new airplane.

To enter any door, select the



Enter the Lab



When you reach the Crash Hangar room, you will see several icons on the top left and controls on the bottom. Simply walk around the room to inspect the aircraft.

You Are Now Ready to

